

LED WELLGLASS LIGHTING FIXTURES

EVCC-PR3/LED Series - Copper-free aluminium



- Tank inspection lighting fixtures are recommended for applications where high luminous performances are required to light extreme dark spaces such as tanks and/or water towers.
- Manufactured in copper-free aluminium and suitable for LED lamp.

MARKING

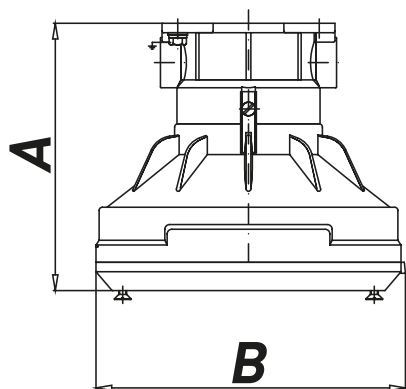
II 2 G Ex db IIC T3 Gb

II 2 D Ex tb IIIC T200°C Db

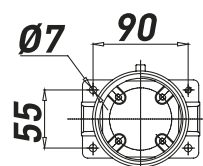
TECHNICAL FEATURES

Material	Copper-free aluminium and tempered glass
IP rating	IP66
Ambient temperature range	-60°C to +60°C
Approvals	ATEX: INERIS 01ATEX0019X - IECEX: INE 15.0031X EAC: RU C-IT.BH02.B.00616/20
Zones	Gas Zone: 1, 2 Dust Zone: 21, 22
Rated voltage	220-240 VAC
Frequency	50/60 Hz
Colour rendering index	80 CRI
Colour temperature	5.700 K 4.000 K upon request
Power factor	$\cos \varphi \geq 0,98$
Surge protection	8kV
Driver	Integrated
LED Lifetime (L70) Ta+25°C	>25.000 h - according to IES LM-80-08
Hardware and screws	AISI316L stainless steel
Coating	Painted by polyurethane painting: RAL5014 painting cycle C4 suitable for On-Shore The reference standard is UNI EN ISO 12944 - 1: 2018 Upon request other colours and painting cycles
Entries	2 x entries M25 Upon request M20, 3/4" and 1/2" NPT
Through wiring	Loop-in/ Loop-out
Plug	1 x M25 plastic plug 1 x M25 brass nickel chrome plated plug c/w gasket (mounted)
Accessories upon request	Mounting kit in AISI316L stainless steel: Pole mounting kit, from 1" 1/2 up to 2" Cable gland kit in brass nickel chrome or AISI316L stainless steel Protection guard in AISI316L stainless steel Mounting plate for internal lighting tank inspection

Dimensions EVCC LED



Fixing detail



LED EVCC-PR tank inspection lights

CODE	TYPE	POWER [W]	LUMEN [lm]	LUM. EFF [lm/W]	DIMENSIONS [mm]		WEIGHT
					A	B	
A031660790001	EVCC-PR3/LED	5,5	540	86	170	194	5,00
A031660710001	EVCC-PR3/LED	9	820	90	170	194	5,00

Photometric light curves

